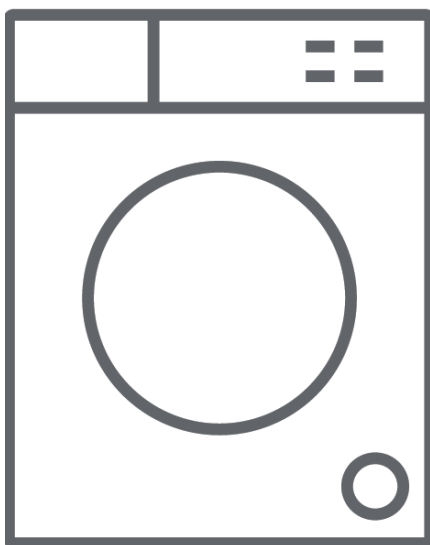


UNITED

EN Washing Machine / User Manual



UWM-6107

CONTENTS

SAFETY INSTRUCTIONS

- Safety Instructions 2

INSTALLATION

- Product Description 7
- Installation 8

OPERATIONS

- Quick Start 11
- Before Each Washing 12
- Detergent Dispenser 13
- Control Panel 14
- Option..... 15
- Other Functions 16
- Programs..... 17
- Washing Programs Table 18

MAINTENANCE

- Cleaning And Care 19
- Trouble Shooting 22
- Technical Specifications 23
- Product Fiche 24

SAFETY INSTRUCTIONS

■ Safety Instructions

For your safety, the information in this manual must be followed to minimize the risk of fire or explosion, electric shock, or to prevent property damage, personal injury or loss of life.

Explanation of the symbols:

Warning!

This combination of symbol and signal word indicates a potentially dangerous situation which may result in death or serious injuries unless it's avoided.

Caution!

This combination of symbol and signal word indicates a potentially dangerous situation which may result in slight or minor injuries or damage to property and the environment.

Note!

This combination of symbol and signal word indicates a potentially dangerous situation which may result in slight or minor injuries.

Warning!

The electric shock!

- If the supply cord is damaged, it must be replaced by the manufacturer, its service agent or similarly qualified persons in order to avoid a hazard.

SAFETY INSTRUCTIONS

- The new hose-sets supplied with the appliance are to be used and that old hose-sets should not be reused.
- Before any maintenance the device, unplug the appliance from the mains.
- Always unplug the machine and turn off the water supply after use. The max. inlet water pressure, in pascals. The min. inlet water pressure, in pascals.
- To ensure your safety, power plug must be inserted into an earthed three-pole socket. Check carefully and make sure that your socket is properly and reliably earthed.
- Make sure that the water and electrical devices must be connected by a qualified technician in accordance with the manufacturer's instructions and local safety regulations.

Risk to children!

- EN countries: the appliance can be used by children aged from 8 years and above and persons with reduced physical, sensory or mental capabilities or lack of experience and knowledge if they have been given supervision or instruction concerning use of the appliance in a safe way and understand the hazards involved. Children shall not play with the appliance. Cleaning and user maintenance shall not be made by children without supervision.
- Children of less than 3years should be supervised to ensure that they do not play with appliance.
- Animals and children may climb into the machine. Check the machine before every operation.
- Kids should be supervised that they do not play with the appliance.

SAFETY INSTRUCTIONS

- Glass door may be very hot during the operation. Keep kids and pets far away from the machine during the operation in very wet rooms as well as in the rooms with explosive or caustic gas.
- Remove all packages and transport bolts before using the appliance. Otherwise, serious damage may result.
- Plug must be accessible after installation.

Risk of explosion!

- Do not wash or dry articles that have been cleaned in, washed in, soaked in, or dabbed with combustible or explosive substances (such as wax, oil, paint, gasoline, degreasers, dry-cleaning solvents, kerosene, etc.) This may result in fire or explosion.
- Before hand thoroughly rinse items of washing by hand.

⚠ Caution!

Installing the product!

- This washing machine is for indoor use only.
- It isn't intended to be built-in using.
- The openings must not be obstructed by a carpet.
- Washing machine shall not be installed in bath room or very wet rooms as well as in the rooms with explosive or caustic gases.
- The washing machine with single inlet valve only can be connected to the cold water supply. The product with double inlet valves should be correctly connected to the hot water and cold water supply.
- Plug must be accessible after installation.

SAFETY INSTRUCTIONS

- Remove all packages and transport bolts before using the appliance. Otherwise, serious damage may result.

Risk of damaging appliance!

- Your product is only for home use and is only designed for the textiles suitable for machine washing.
- Do not climb up and sit on top cover of the machine.
- Do not lean against machine door.
- Cautions during handling machine:
 1. Transport bolts shall be reinstalled to the machine by a specialized person.
 2. The accumulated water shall be drained out of the machine.
 3. Handle the machine carefully. Never hold each protruded part on the machine while lifting. Machine door can not be used as the handle during the conveyance.
 4. This appliance is heavy. Transport with care.
- Please do not close the door with excessive forces. If it is found difficult to close the door, please check if the clothes are put in or distributed well.
- It is forbidden to wash carpets.

Operating the appliance

- Before washing the clothes for the first time, the product shall be operated in one round of the whole procedures without any clothes inside.
- Flammable and explosive or toxic solvents are forbidden. Gasoline and alcohol etc. shall not be used as detergents. Please only select the detergents suitable for machine washing, especially for drum.

SAFETY INSTRUCTIONS

- Make sure that all pockets are emptied. Sharp and rigid items such as coins, brooch, nail, screws, stones etc. may cause serious damages to the washing machine.
- Please check whether the water inside the drum has been drained before opening its door. Please do not open the door if there is visible water.
- Be careful of burning out when the product drains hot washing water.
- Never refill with water by hand during washing.
- After the program is completed, please wait for two minutes to open the door.

Disposal Old appliance

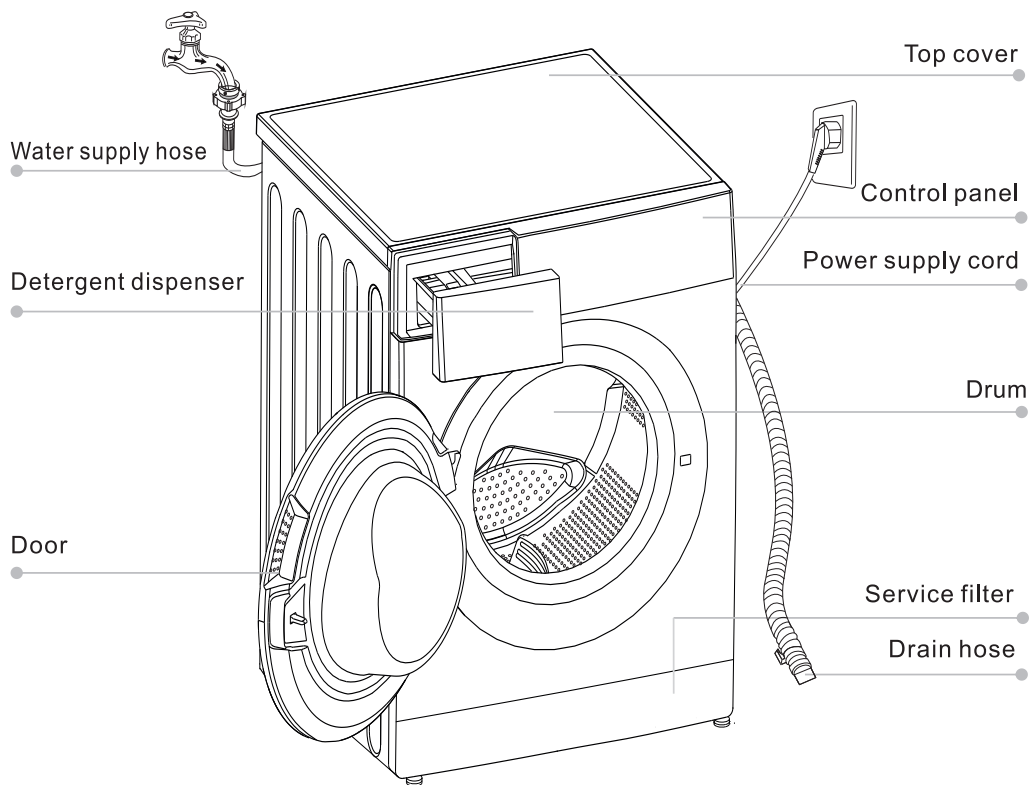


This marking indicates that this product should not be disposed with other household wastes throughout the EU. To prevent possible harm to the environment or human health from uncontrolled waste disposal, recycle it responsibly to promote the sustainable reuse of material resources.

To return your used device, please use the collection systems or contact the retailer where the product was purchased. They return and can take this product for environmental safe recycling.

INSTALLATION

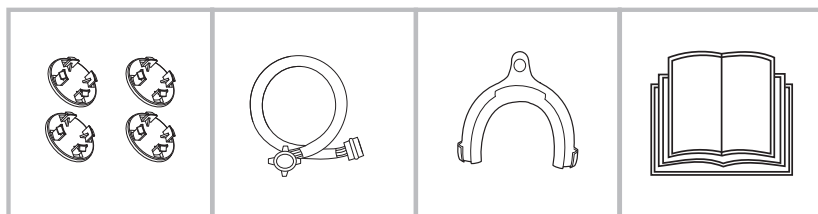
■ Product Description



Note!

- The product line chart is for reference only, please refer to real product as standard.

Accessories



Transport hole plug

Supply hose cold water

Drain hose support (optional)

Owner's manual

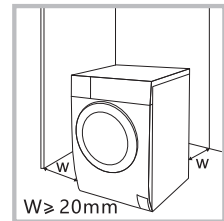
INSTALLATION

■ Installation

Installation area

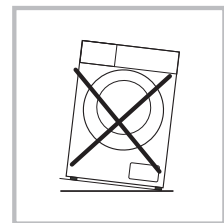
⚠ Warning!

- Stability is important to prevent the product from wandering!
- Make sure that the product should not stand on the power cord.



Before installing the machine, the location characterized as follows shall be selected:

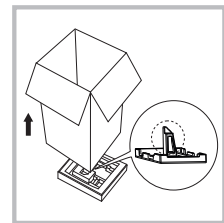
1. Rigid, dry, and level surface
2. Avoid direct sunlight
3. Sufficient ventilation
4. Room temperature is above 0°C
5. Keep far away from the heat resources such as coal or gas.



Unpacking the washing machine

⚠ Warning!

- Packaging material (e.g. Films, Styrofoam) can be dangerous for children.
- There is a risk of suffocation ! Keep all packaging well away from children.



1. Remove the cardboard box and styrofoam packing.
2. Lift the washing machine and remove the base packing. Make sure the small triangle foam is removed with the bottom one together. If not, lay the unit down with side surface, then remove the small foam from the unit bottom manually.
3. Remove the tape securing the power supply cord and drain hose.
4. Remove the inlet hose from the drum.

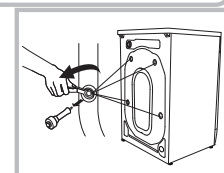
Remove transport bolts

⚠ Warning!

- You must remove the transport bolts from the backside before using the product.
- You'll need the transport bolts again if you move the product, so make sure you keep them in a safe place.

Please take the following steps to remove the bolts:

1. Loosen 4 bolts with spanner and then remove them.
2. Stop the holes with transport hole plugs.
3. Keep the transport bolts properly for future use.



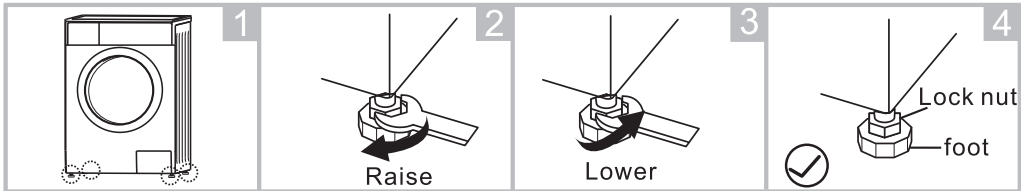
INSTALLATION

Levelling the washing machine

⚠ Warning!

- The lock nuts on all four feet must be screwed tightly against the housing.

1. Check if the legs are closely attached to the cabinet. If not, please turn them to their original positions tighten the nuts.
2. Loosen the lock nut turn the feet until it closely contacts with the floor.
3. Adjust the legs and lock them with a spanner, make sure the machine is steady.



Connect Water Supply Hose

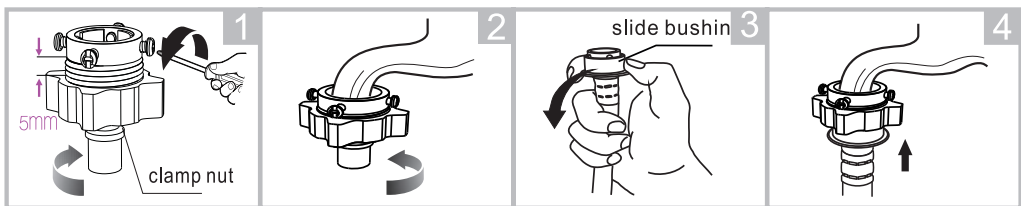
⚠ Warning!

- To prevent leakage or water damage, follow the instructions in this chapter!
- Do not kink, crush, modify or sever water inlet hose.
- For the model equips hot valve, connect it to hot water tap with hot water supply hose. Energy consumption will decrease automatically for some program.

Connect the inlet pipe as indicated.

There are two ways to connect the inlet pipe:

1. Connection between ordinary tap and inlet hose.



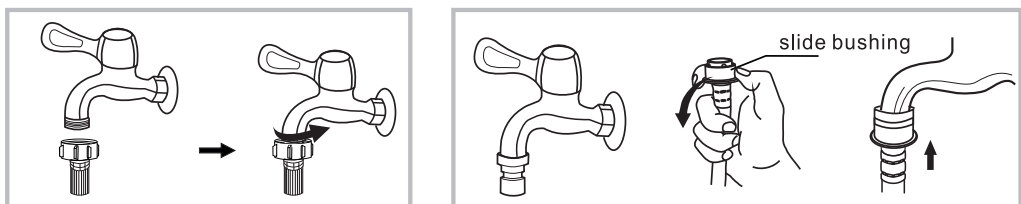
Loosen clamp nut and four bolts

Tighten clamp nut

Press slide bushing, insert inlet hose into connecting base

Connection finished

2. Connection between screw tap and inlet hose.

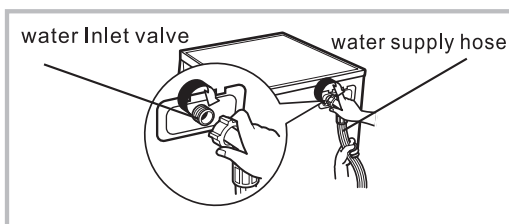


Tap with threads and inlet hose

Special tap for washing machine

INSTALLATION

Connect the other end of inlet pipe to the inlet valve at the backside of product and fasten the pipe tightly clockwise.



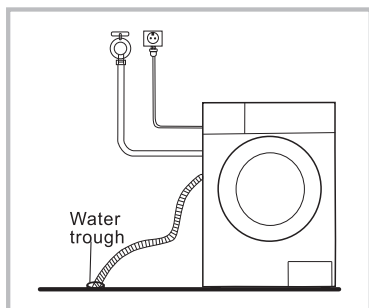
Drain Hose

⚠ Warning!

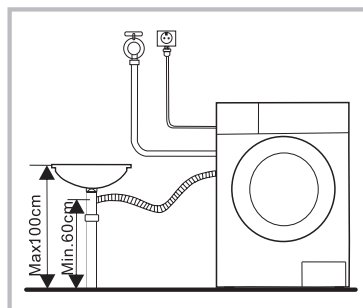
- Do not kink or protract the drain hose.
- Position drain hose properly , otherwise damage might result of water leakage.

There are two ways to place the end of drain hose:

1.Put it into the water trough.

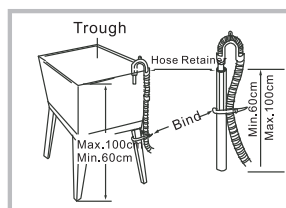
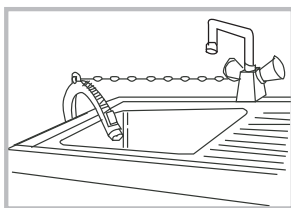


2.Connect it to the branch drain pipe of the trough.



📌 Note!

- If the machine has drain hose support, please install it like the following:



⚠ Warning!

- When installing drain hose, fix it properly with a rope.
- If drain hose is too long, do not force it into washing machine as it will cause abnormal noises.

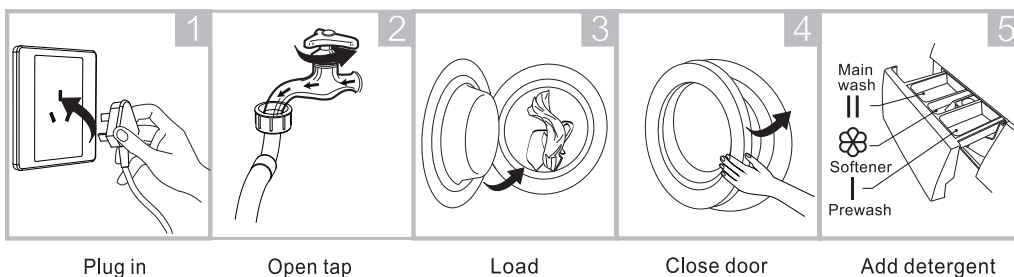
OPERATIONS

■ Quick Start

⚠ Caution!

- Before washing, please make sure it's installed properly.
- Before washing for the first time, the washing machine shall be operated in one round of the whole procedures without any clothes in, as follows:

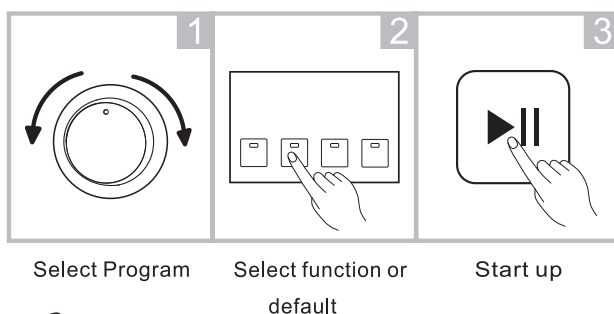
1. Before Washing



📌 Note!

- Detergent need to be added in "case I" after selecting pre-washing for machines with this function.

2. Washing



📌 Note!

- If default is selected, step 2 can be skipped.
- The function button line chart is for reference only, please refer to real product as standard.

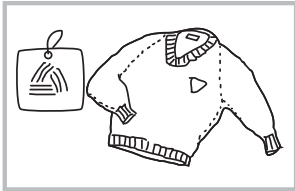
3. After Washing

The door lock and the [Start / Pause] lights flash with the buzzer beeping or two small points flash on the digital screen.

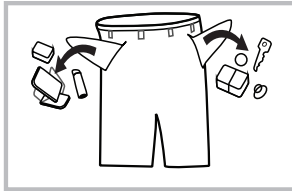
OPERATIONS

■ Before Each Washing

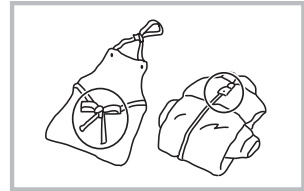
- The working condition of the washer should be (0-40)°C. If used under 0°C, the inlet valve and draining system may be damaged. If the machine is placed under condition of 0°C or less, then it should be transferred to normal ambient temperature to ensure the water supply hose and drain hose are not frozen before use.
- Please check the labels and the explanation of using detergent before wash. Use non-foaming or less-foaming detergent suitable for machine washing properly.



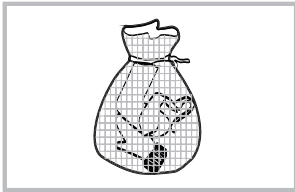
Check the label



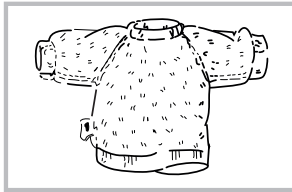
Take out any items out of the pockets



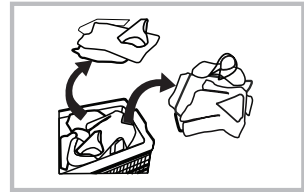
Knot the long strips, zippers or buttons



Put small clothes into the pillow slip



Turn easy-pilling and long-pile fabric inside out



Separate clothes with different textures

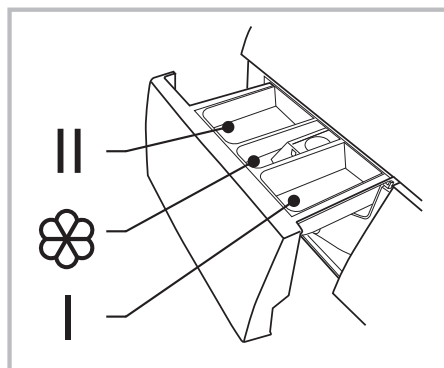
⚠ Warning!

- When washing a single cloth, it may easily cause great eccentricity and give alarm due to great unbalance. Therefore it is suggested to add one or two more clothes to be washed together so that draining can be done smoothly.
- Do not wash the clothes touching with kerosene, gasoline, alcohol and other flammable materials.

OPERATIONS

■ Detergent Dispenser

- I Prewash detergent
- II Main wash detergent
- ☼ Softener



Pull out the dispenser

⚠ Caution!

- Detergent only need to be added in "case I" after selecting pre-washing for machines with this function.

Program	I	II	☼	Program	I	II	☼
Cotton 30 °C	○	●	○	Delicate 30 °C		●	○
Cotton 40 °C	○	●	○	Delicate		●	○
Cotton 60 °C	○	●	○	Ends in 9H		●	○
Cotton 90 °C	○	●	○	Ends in 6H		●	○
Synthetic	○	●	○	Ends in 3H		●	○
Synthetic 40 °C	○	●	○	Quick Wash 45'		●	○
Drum Clean				Quick Wash 30'		●	○
Cold Wash	○	●	○	Quick Wash 15'		●	○
Cold Wash 20 °C	○	●	○	ECO 40-60		●	○
Spin Only				Cotton Intensive 40 °C		●	○
Drain Only				Cotton Intensive 60 °C		●	○
Rinse&Spin			○				

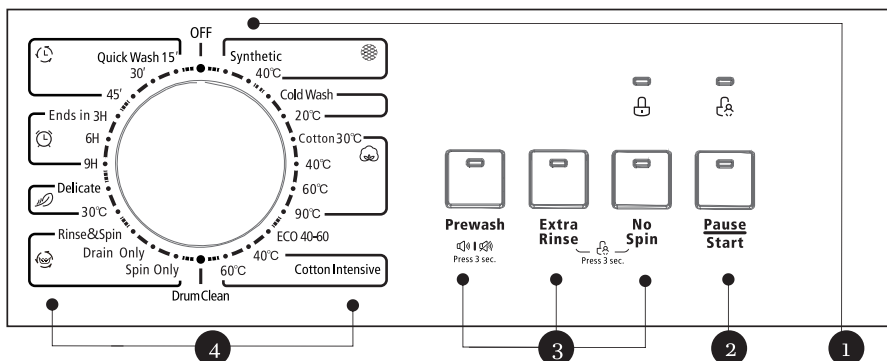
- Means must
- Means optional

📌 Note!

- As for the agglomerated or ropy detergent or additive, before they are poured into the detergent box, it is suggested to use some water for dilution to prevent the inlet of detergent box from being blocked and overflowing while filling water.
- Please choose suitable type of detergent for the various washing temperature to get the best washing performance with less water and energy consumption.

OPERATIONS

■ Control Panel



Note!

- The chart is for reference only. Please refer to real product as standard.

1 Off

Product is switched off.

2 Start / Pause

Press the button to start or pause the washing cycle.

3 Option

This allows you to select an additional function and will light when selected.

4 Programs

Available according to the laundry type.

Note!

- When the program is finished, the Pause/Start and Door Lock lights flash.

OPERATIONS

■ Optional

Prewash: The Prewash function can get an extra wash before main wash, it is suitable for washing the dust rises to surface of the clothes;
You need to put detergent into the case (I) when select it.

Extra Rinse: The laundry will undergo extra rinse once after you select it.

No Spin: It will not spin if you choose this function.

Programme	Option		Programme	Option	
	Prewash	Extra Rinse		Prewash	Extra Rinse
Cotton 30 °C	<input type="radio"/>	<input type="radio"/>	Ends in 9H		
Cotton 40 °C	<input type="radio"/>	<input type="radio"/>	Ends in 6H		
Cotton 60 °C	<input type="radio"/>	<input type="radio"/>	Ends in 3H		
Cotton 90 °C	<input type="radio"/>	<input type="radio"/>	Quick Wash 45'		
Synthetic	<input type="radio"/>	<input type="radio"/>	Quick Wash 30'		
Synthetic 40 °C	<input type="radio"/>	<input type="radio"/>	Quick Wash 15'		
Drum Clean			Spin Only		
Cotton Intensive 40°C			Cold Wash	<input type="radio"/>	<input type="radio"/>
Cotton Intensive 60°C			Cold Wash 20 °C	<input type="radio"/>	<input type="radio"/>
Drain Only			ECO 40-60		
Rinse&Spin		<input type="radio"/>			
Delicate 30 °C		<input type="radio"/>			
Delicate		<input type="radio"/>			

○ Means optional

OPERATIONS

■ Other Functions



Mute the buzzer



Choose the Program Press the [Prewash] button for 3sec. The buzzer is mute.

To activate the buzzer function, press the button again for 3 seconds. The setting will be kept until the next reset.

⚠ Caution!

- After muting the buzzer function, the sounds will not be activated any more.



Child Lock

To avoid misoperation by children.



Choose the Program

Start

Press [Extra Rinse] and [No Spin] 3 sec. till buzzer beep.

⚠ Caution!

- Only press and hold the two button can release "Child Lock", even power off, switch off and program end, the "Child Lock" will lock all buttons except power button and "Child Lock" button.
- Please release "Child Lock" before selecting program and starting washing.

OPERATIONS

■ Programs

Programs are available according to the laundry type.

Programs	
Synthetic	Wash synthetic articles, for example: shirts, coats, blending. While washing the knitting textiles, detergent quantity shall be reduced due to its loose string construction and easily forming bubbles.
Delicate	For delicate, washable textiles, e.g. made of silk, satin, synthetic fibres or blended fabrics.
Drum Clean	It applies 90 °C high temperature sterilization to make the clothes washing more green. When this procedure is performed, the clothes or other washing cannot be added. When proper amount of chlorine bleaching agent is put in, the barrel cleaning effect will be better. The customer can use this programme regularly according to the need.
Spin Only	Extra spin with selectable spin speed.
Rinse & Spin	Extra rinse with spin.
Drain Only	Drain off the water.
Quick Wash 15'	It is suitable for washing few and not very dirty clothes quickly.
Cotton Intensive	To increase the washing effects, washing time is increased.
ECO 40-60	Default 40°C, not selectable, suitable for laundry washing at about 40°C-60°C.
Cold Wash	Cold water to wash clothes.
Cotton	Hard-wearing textiles, heat-resistant textiles made of cotton or linen.
Ends in	The function can be set with this programme, the total time including washing time and delaying time is 3h, 6h or 9h.

OPERATIONS

■ Washing Programmes Table

Model: UWM-6107

Program	Load(kg)	Temp.(°C)	Default Time
	6.0	Default	6.0
Synthetic	3.0	Cold	2:20
Synthetic 40°C	3.0	40	2:20
Cold Wash	6.0	Cold	1:00
Cold Wash 20°C	6.0	20	1:01
Cotton 30°C	6.0	30	2:40
Cotton 40°C	6.0	40	2:40
Cotton 60°C	6.0	60	2:45
Cotton 90°C	6.0	90	2:50
ECO 40-60	6.0	60	3:16
Cotton Intensive 40°C	6.0	40	4:04
Cotton Intensive 60°C	6.0	60	4:08
Drum Clean	-	90	1:18
Spin Only	6.0	-	0:12
Drain Only	-	-	0:01
Rinse&Spin	6.0	-	0:20
Delicate 30°C	2.5	30	0:50
Delicate	2.5	Cold	0:48
Ends in 9H	6.0	40	0:59
Ends in 6H	6.0	40	0:59
Ends in 3H	6.0	40	0:59
Quick Wash 45'	2.0	40	0:45
Quick Wash 30'	2.0	30	0:30
Quick Wash 15'	2.0	Cold	0:15

- The new EU energy efficiency class is E
Energy test program: ECO 40-60. Speed: the highest speed; Other as the default.
Half load for 6.0Kg machine:3.0Kg.
The old EU energy efficiency class is A+
Energy test program: Cotton Intensive 60°C/40°C.Speed: the highest speed;
Other as the default.
Half load for 6.0Kg machine:3.0Kg.

Note!

- The parameters in this table are only for user's reference. The actual parameters may be different with the parameters in above mentioned table.

MAINTENANCE

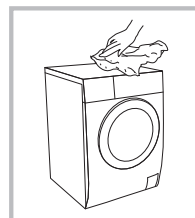
■ Cleaning And Care

⚠ Warning!

- Before your maintenance starts, please unplug the machine and close the tap.

Cleaning The Cabinet

Proper maintenance on the washing machine can extend its working life. The surface can be cleaned with diluted non-abrasive neutral detergents when necessary. If there is any water overflow, use the wet cloth to wipe it off immediately. No sharp items are allowed.



📌 Note!

- Formic acid and its diluted solvents or equivalent are forbidden, such as alcohol, solvents or chemical products, etc.

Cleaning The Drum

The rusts left inside the drum by the metal articles shall be removed immediately with chlorine-free detergents.

Never use steel wool.

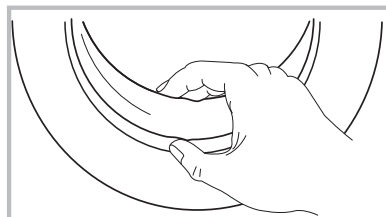
📌 Note!

- Don't put laundry in the washing machine during the drum cleaning.

Cleaning The Door Seal And Glass

Wipe the glass and seal after each wash to remove lint and stains. If lint builds up it can cause leaks.

Remove any coins, buttons and other objects from the seal after each wash.



MAINTENANCE

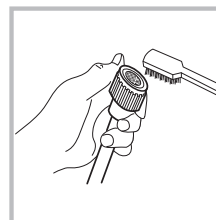
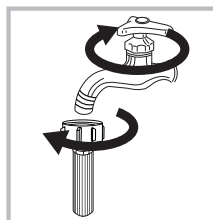
Cleaning The Inlet Filter

Note!

- Inlet filter must be cleaned if there is less water.

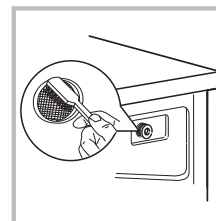
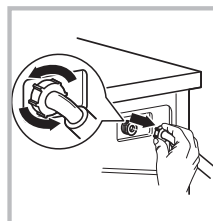
Washing the filter in the tap

1. Close the tap.
2. Remove the water supply hose from the tap.
3. Clean the filter.
4. Reconnect the water supply hose.



Washing the filter in washing machine:

1. Screw off the inlet pipe from the backside of the machine.
2. Pull out the filter with long nose pliers and reinstall it back after being washed.
3. Use the brush to clean the filter.
4. Reconnect the inlet pipe.

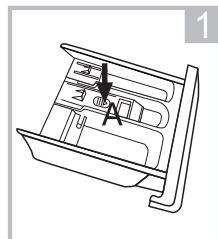


Note!

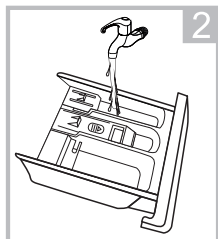
- If the brush is not clean, you can pull out the filter washed separately;
- Reconnect, turn on the tap.

Clean The Detergent Dispenser

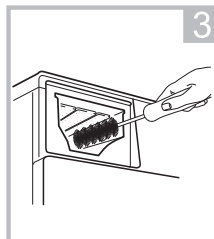
1. Press down the arrow location on softener cover inside the dispenser drawer.
2. Lift the clip up and take out softener cover and wash all grooves with water.
3. Restore the softener cover and push the drawer into position.



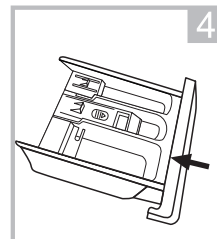
1 Pull out the dispenser drawer pressing A



2 Clean the dispenser drawer under water



3 Clean inside the recess with an old toothbrush



4 Insert the dispenser drawer

Note!

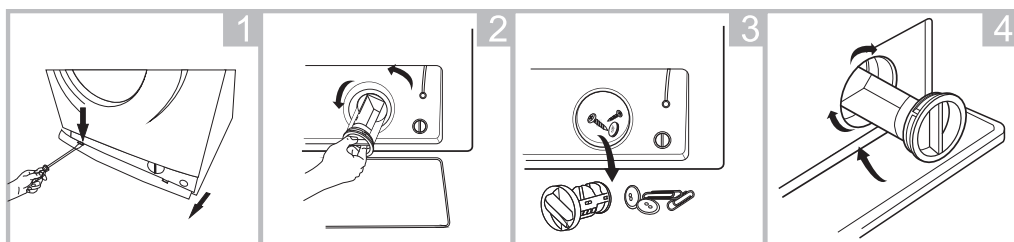
- Do not use alcohol, solvents or chemical products to clean the machine.

MAINTENANCE

Cleaning The Drain Pump Filter

⚠ Warning!

- Be careful of the hot water!
- Allow detergent solution to cool down.
- Unplug the machine to avoid electrical shock before washing.
- Drain pump filter can filter the yarns and small foreign matters from the washing.
- Clean the filter periodically to ensure the normal operation of washing machine.



1 Open the Service filter

2 Open the filter by turning to the counter clockwise

3 Remove extraneous matter

4 Close the lower cover cap

⚠ Caution!

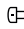
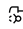
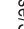
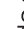
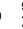



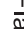


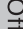
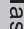
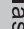
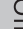
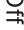
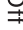
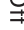
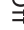
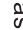
- Make sure that valve cap and emergency drain hose are reinstalled properly, cap plates should be inserted aligning to hole plates otherwise water may leak;
- Some machines do not have emergency drain hose. Rotate lower cover cap directly to make water run into basin.
- When the appliance is in use, depending on the program selected there can be hot water in the pump. Never remove the pump cover during a wash cycle. Always wait until the appliance has finished the cycle, and is empty. When replacing the cover, ensure it is securely re-tightened.

MAINTENANCE

■ Troubleshooting

The start of the appliance does not work or it stops during operation. First try to find a solution to the problem, If not, contact the service centre.

Description	Reason	Solution
Washing machine cannot start up	Door is not closed properly	Restart after the door is closed Check if the clothes is stuck
Door can't be opened	Washer's safety protection design is working	Disconnect the power, restart the product
Water leakage	The connection between inlet pipe or outlet hose is not tight	Check and fasten water pipes Clean up outlet hose
Detergent residues in the box	Detergent is dampened or agglomerated	Clean and wipe the detergent box
Indicator or display does not light	Disconnect the power PC board or harness has connection problem	Check if the power is shut down and the power plug is connected correctly
Abnormal noise		Check if the fixing (bolts) have been removed Check it's installed on a solid and level floor

Description	Reason	Solution
    	Door is not closed properly	Restart after the door is closed Check if the clothes is stuck
    	Water injecting problem while washing	Check if the water pressure is too low Straighten the water pipe Check if the inlet valve filter is blocked
    	Overtime water draining	Check if the drain hose is blocked
    	Water overflow	Restart the washer
	Others	Please try again first, call up service line if there are still troubles

Note!

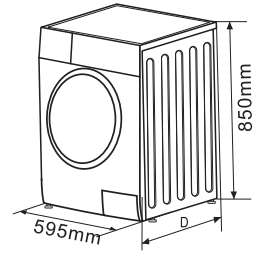
- After the check, activate the appliance. If the problem occurs again, contact the service.

MAINTENANCE

■ Technical Specifications

Power Supply	220-240V~,50Hz
MAX.Current	10A

Standard Water Pressure 0.05MPa~1MPa



Model	Washing Capacity	Dimension (W*D*Hmm)	Net Weight	Rated Power
UWM-6107	6.0kg	595*400*850	52kg	2000W

PRODUCT FICHE

Product fiche concerning to Regulation (EU) No 1061/2010

Trade mark	UNITED
Model identifier	UWM-6107
Rated capacity in kg of cotton laundry	6
Energy efficiency class on a scale from A+++ (most efficient) bis D (least efficient)	A+
Energy consumptior 196kWh per year, based on 220 standard washing cycles for the standard cotton programmes at 60 °C and 40 °C at full and partial load, and the consumption of the low-power modes. Actual energy consumption will depend on how the appliance is used.	
Energy consumption of the standard 60°C cotton programme at full load	0.93kwh
Energy consumption of the standard 60°C cotton programme at partial load	0.80kwh
Energy consumption of the standard 40°C cotton programme at partial load	0.83kwh
Weighted power consumption of the off-mode	0.50W
Weighted power consumption of the left-on mode	1.00W
Water consumption 9240 litres per year, based on 220 standard washing cycles for the standard cotton programmes at 60 °C and 40 °C at full and partial load. Actual water consumption will depend on how the appliance is used.	
spin-drying efficeincy class C on a scale from G (least efficient) to A (most efficient)	
maximum spin speed	1000
Remaining moisture content	62%
'Intensive 60°C programme' and the 'Intensive 40°C programme' are the standard washing programmes to which the information in the label and the fiche relates, that these programmes are suitable to clean normally soiled cotton laundry and that they are the most efficient programmes in terms of combined energy and water consumption.	
Programme time of the standard 60°C cotton programme at full load	260min
Programme time of the standard 60°C cotton programme at half load	260min
Programme time of the standard 40°C cotton programme at half load	245min
duration time of left-on mode	-
Airborne acoustical noise emissions during washing phase	64dB
Airborne acoustical noise emissions during spinning phase	79dB
'built-in' washing machine	no

Energy test program: Cotton Intensive 60/40°C. Speed: the highest speed; Other as the default.

PRODUCT FICHE

Supplier's name or trade mark: UNITED

Supplier's address ^(b): 87A, 17th NOVEMBER STREET, 55535 PYLEA THESSALONIKI, GREECE

Model identifier: **UWM-6107**

General product parameters:

Parameter	Value		Parameter	Value	
Rated capacity ^(a) (kg)	6.0		Dimensions in cm	Height	85
				Width	60
				Depth	40
EEL _w ^(a)	91.0		Energy efficiency class ^(a)	E	
Washing efficiency index ^(a)	1.04		Rinsing effectiveness (g/kg) ^(a)	5.0	
Energy consumption in kWh per cycle, based on the eco 40-60 programme. Actual energy consumption will depend on how the appliance is used.	0.737		Water consumption in litre per cycle, based on the eco 40-60 programme. Actual water consumption will depend on how the appliance is used and on the hardness of the water.	43	
Maximum temperature inside the treated textile ^(a) (°C)	Rated capacity	41	Remaining moisture content ^(a) (%)	Rated capacity	62
	Half	33		Half	62
	Quarter	20		Quarter	62
Spin speed ^(a) (rpm)	Rated capacity	1000	Spin-drying efficiency class ^(a)	C	
	Half	1000			
	Quarter	1000			
Programme duration ^(a) (h:min)	Rated capacity	3:18	Type	free-standing	
	Half	2:36			
	Quarter	2:36			
Airborne acoustical noise emissions in the spinning phase ^(a) (dB(A) re 1 pW)	80		Airborne acoustical noise emission class ^(a) (spinning phase)	C	
Off-mode (W)	0.50		Standby mode (W)	1.00	
Delay start (W) (if applicable)	4.00		Networked standby (W) (if applicable)	NA	

Minimum duration of the guarantee offered by the supplier ^(b): **2 years**

This product has been designed to release silver ions during the washing cycle

NO

Additional information:

Weblink to the supplier's website, where the information in point 9 of Annex II to Commission Regulation (EU) 2019/2023 (1) (b) is found: www.united-electronics.gr

^(a) for the eco 40-60 programme.

^(b) changes to these items shall not be considered relevant for the purposes of paragraph 4 of Article 4 of Regulation (EU) 2017/1369.

^(c) if the product database automatically generates the definitive content of this cell the supplier shall not enter these data.

MAINTENANCE

Note!

- Program setting for testing in accordance with applicable standard EN60456.
- When using the test programs, wash the specified load using the maximum spin speed.
- The actual parameters will depend on how the appliance is used and maybe different with the parameters in above mentioned table.

NOTICE ABOUT RECYCLING



Your product is designed and manufactured with high quality materials and components which can be recycled and reused.

This symbol means that electrical and electronic equipment, at their end-of-life,

should be disposed of separately from your household waste. Please dispose of this equipment at your local community waste collection/ recycling centre.

In the European Union there are separate collection systems for used electrical and electronic products.

Please help us to conserve the environment we live in!

DECLARATION OF CONFORMITY

Herewith, we state that this product, complies with the requirements of below directives:

EMC-Directive: 14 / 30 / EU

Low Voltage Directive: 14/ 35 / EU

ErP Directive 09 / 125 / EC

CE Marking: 93 / 68 / EEC

RoHS Directive: 11 / 65 / EU & Delegated Directive (EU) 15 / 863

The detailed declaration of conformity can be found at

www.united-electronics.gr



IMPORTER:

Kalliopi Karyda & Co, LP

87A, 17th November str.

55535, Pylea, Thessaloniki

Tel. 2316 006600

Fax. 2316 006650

www.united-electronics.gr

CE

